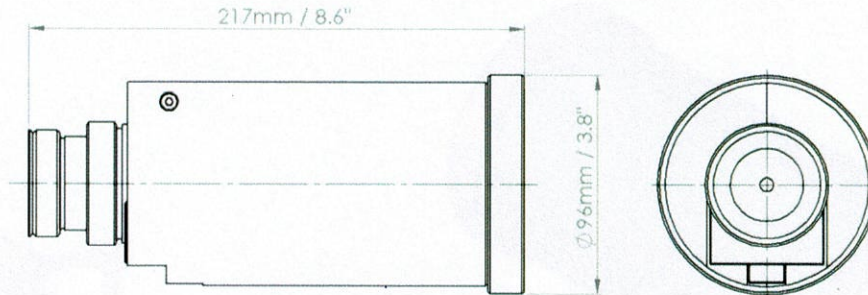
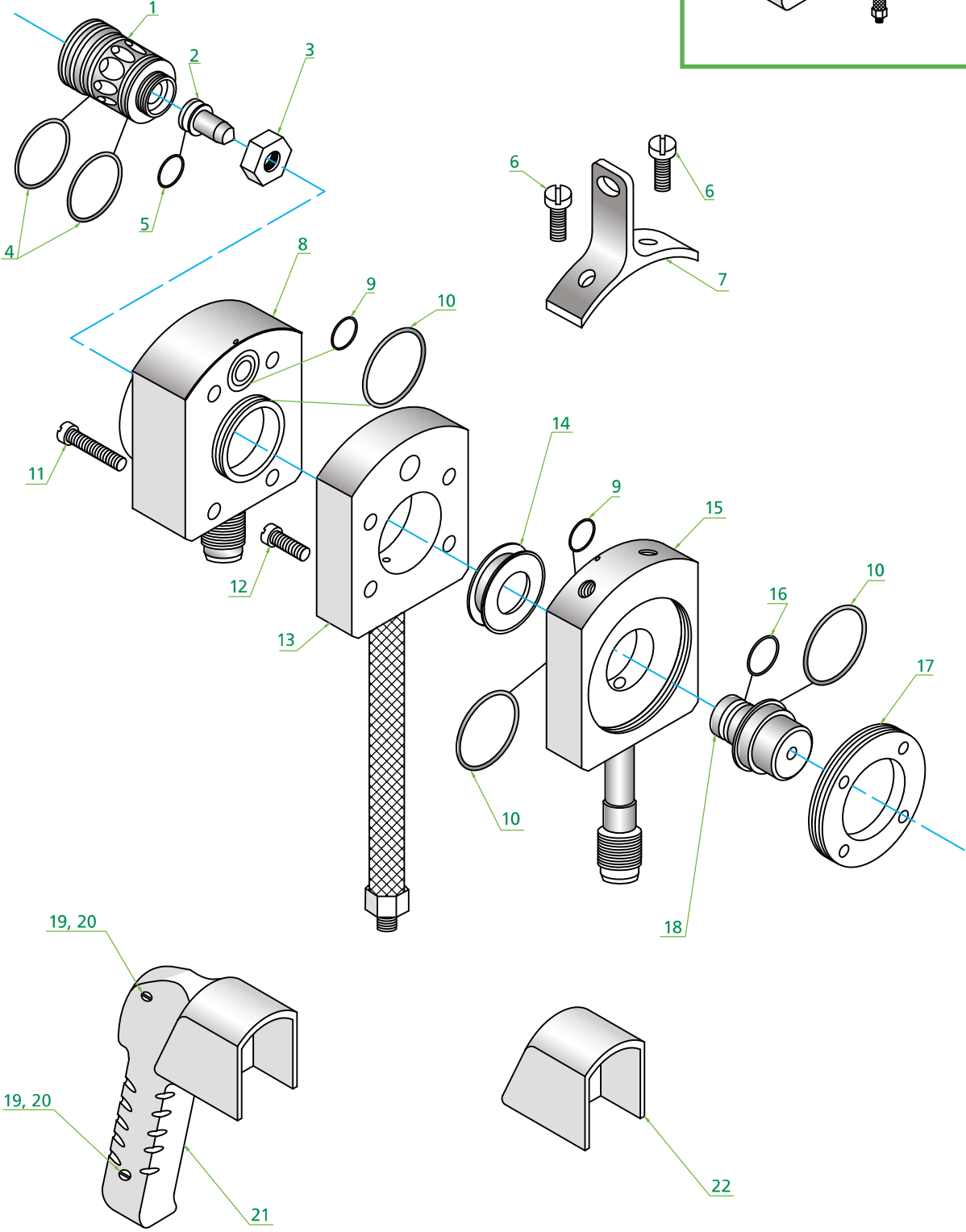
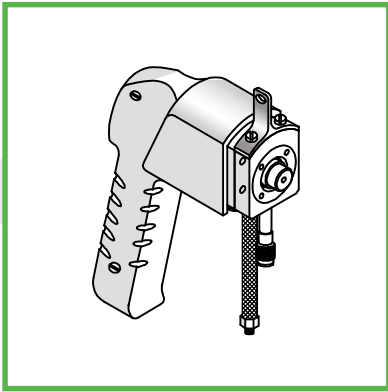


## Technical Specifications

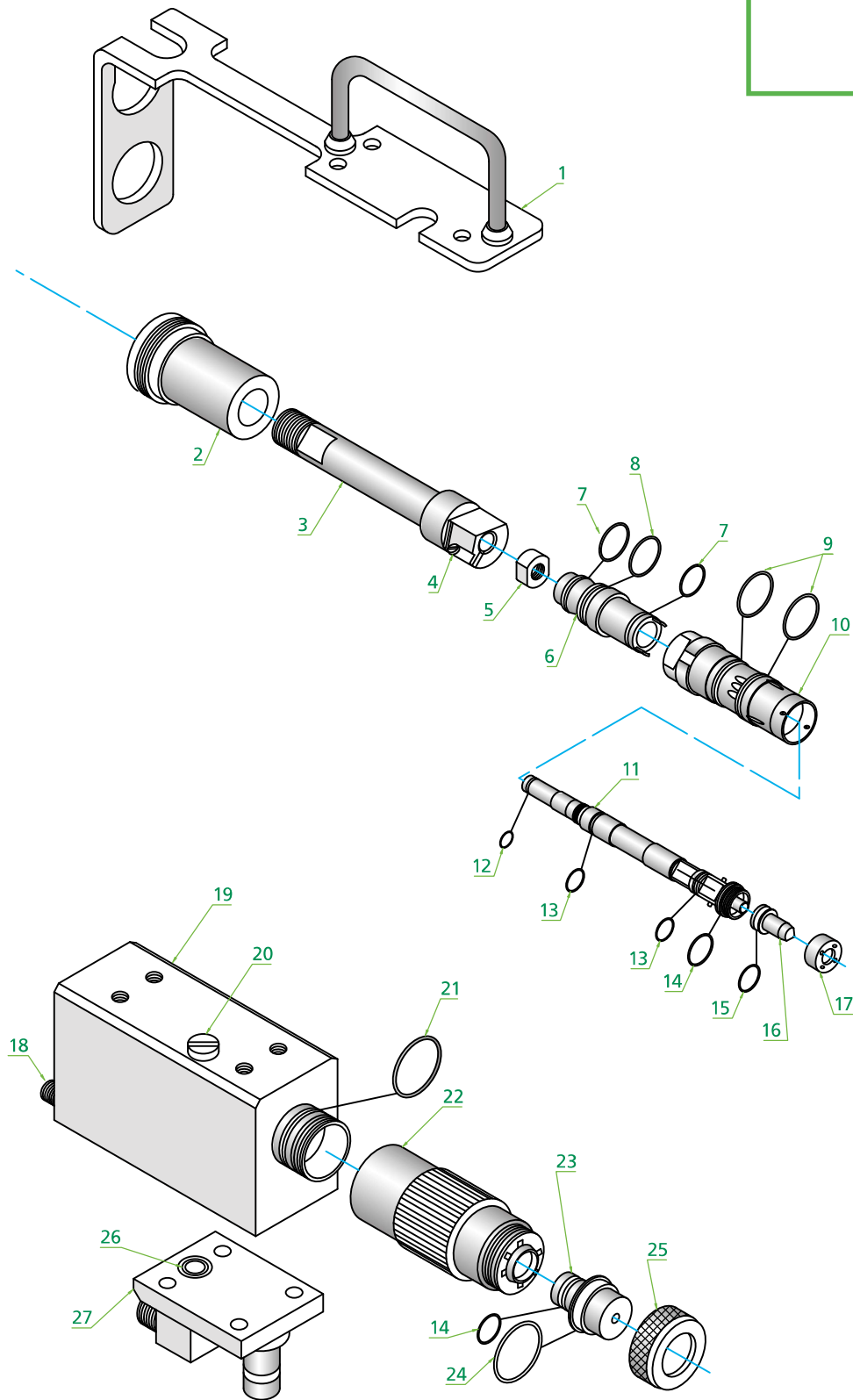
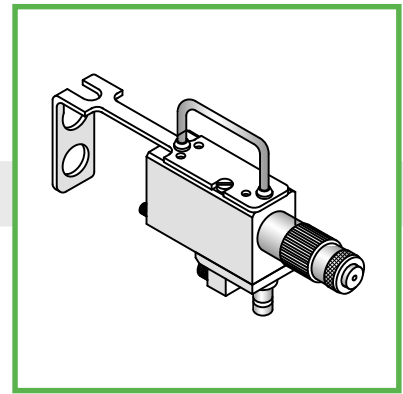


<b>F4-MB</b>	
<b>Power</b>	
Power rating	max. 45kW
<b>Gas Quality</b>	
Argon (Ar)	min. 99.95%
Helium (He)	min. 99.995%
Hydrogen (H2)	min. 99.995%
Nitrogen (N2)	min. 99.7%
<b>Cooling Water Requirements</b>	
Inlet temperature	15 to 25°C   59 to 77°F
Inlet pressure	13.5 bar   196 psi
Flow	10 to 14 l/min   2.6 to 3.7 gal/min
Water hardness	max. 0.28°D / 0.35°E / 0.5°F (0.05 mmol/l)
Conductivity	max. 5µS
<b>Spray rate</b>	
	40 to 80 g/min   0.09 to 0.18 lb/min
Typical efficiency	50 to 80%
<b>Weight</b>	
	2.75kg   6 lb
<b>Compatibility</b>	
Connection	Clerici Engineering AG / Oerlikon Metco Plasma Controllers
Powder feeders	Clerici Engineering AG / Oerlikon Metco Powder Feeders

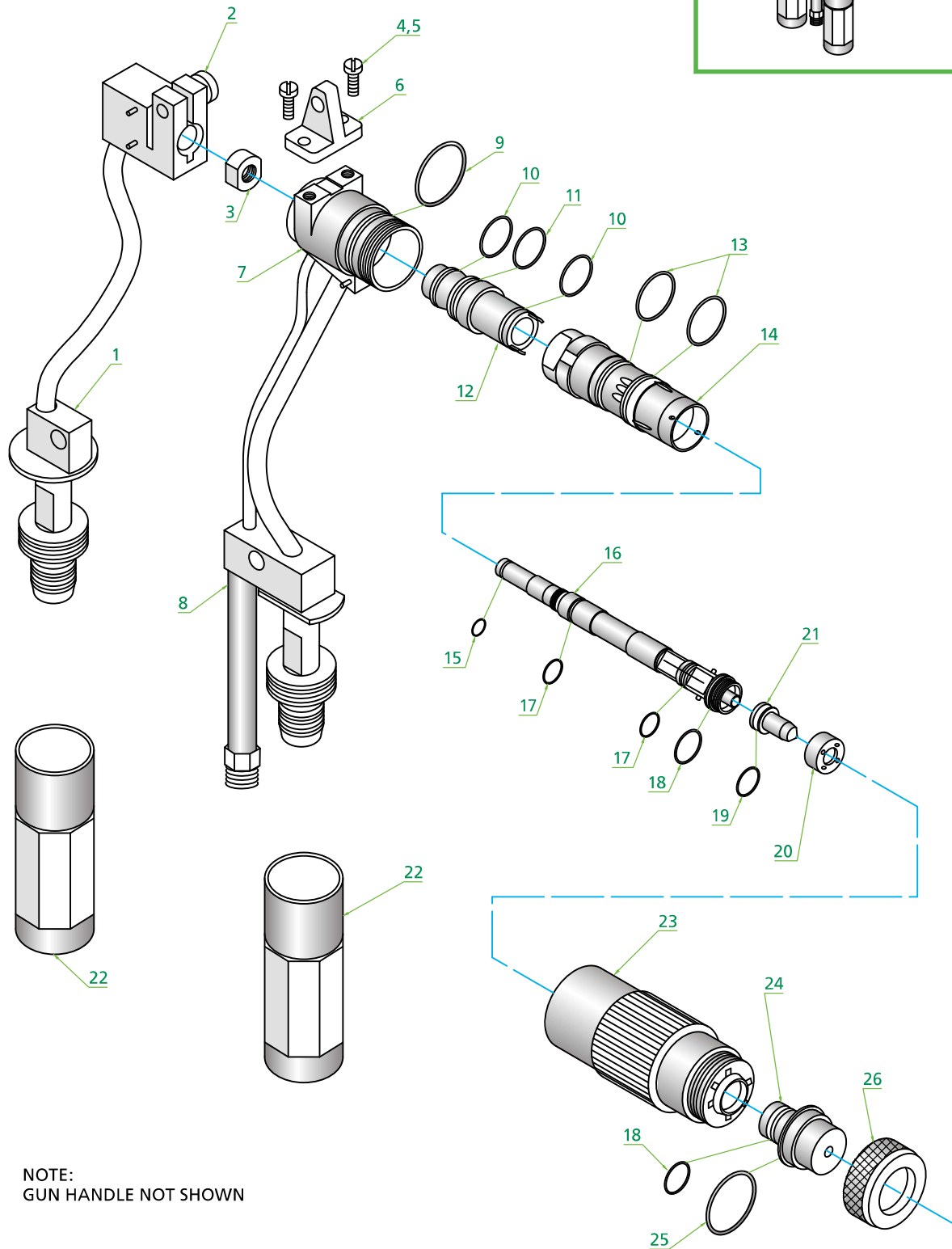
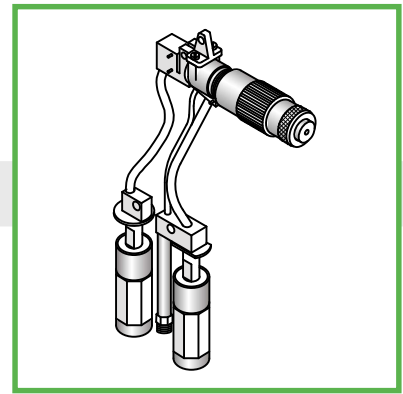
### 3MB Plasma Gun



**9MB Plasma Gun (machine mounted)**

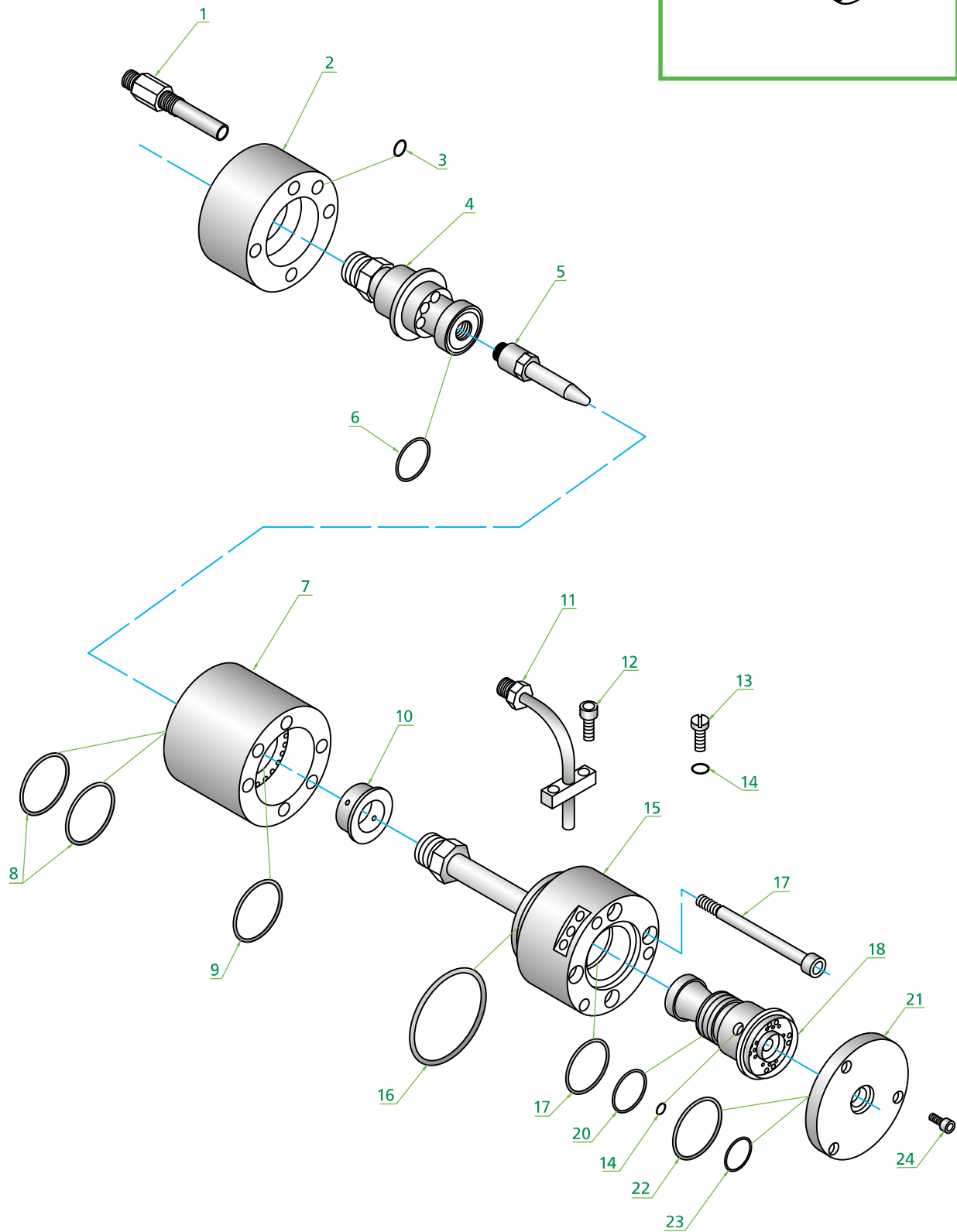
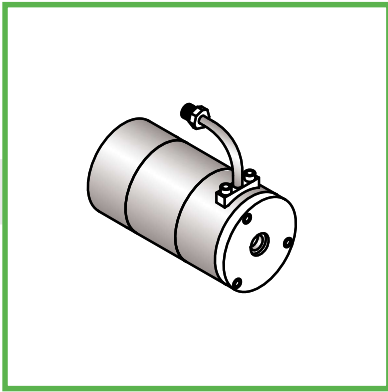


## 9MB Plasma Gun (hand held)



NOTE:  
GUN HANDLE NOT SHOWN

# SG-100 Plasma Gun



## 2086 SG-100 Plasma Gun Extension

